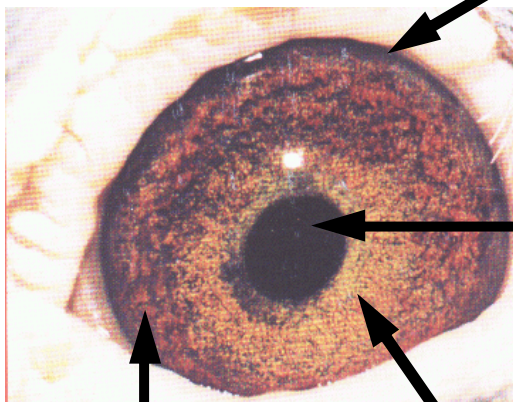


ØJET

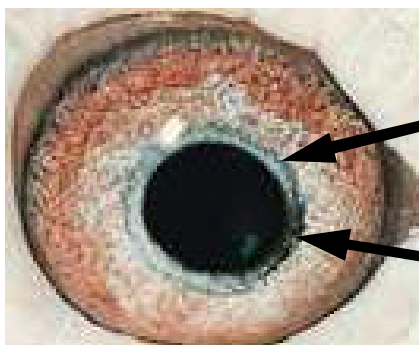
Afslutningsring
(hvis ingen er den svær at avle med)



Pupil
(Så lille som muligt)

2 Iris
(Sort i anden iris en fordel)

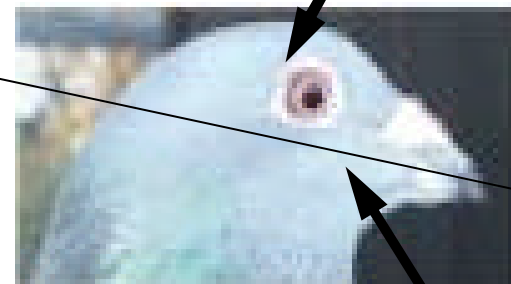
1 Iris
(BRED)



1 Iris
(SMAL)

Flyvecirkler

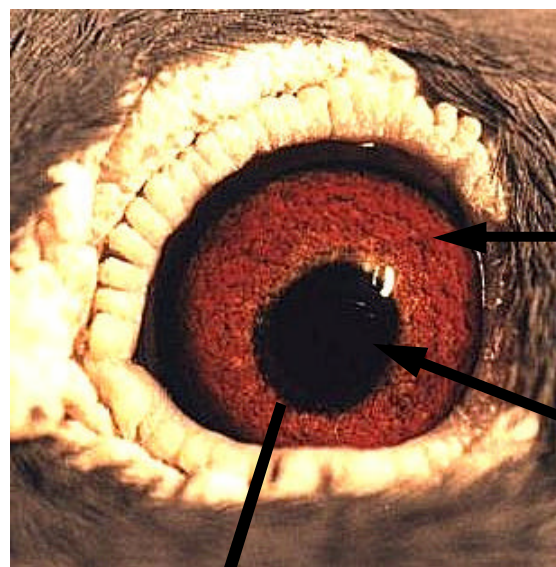
Øjenkrans
(skal være lukket)



Øjets placering
(så højt som muligt)

Bjerge

Avlscirkler



Colleration